

MONTHLY MEMBERSHIP PROGRESS REPORT

LOCATION ALASKA

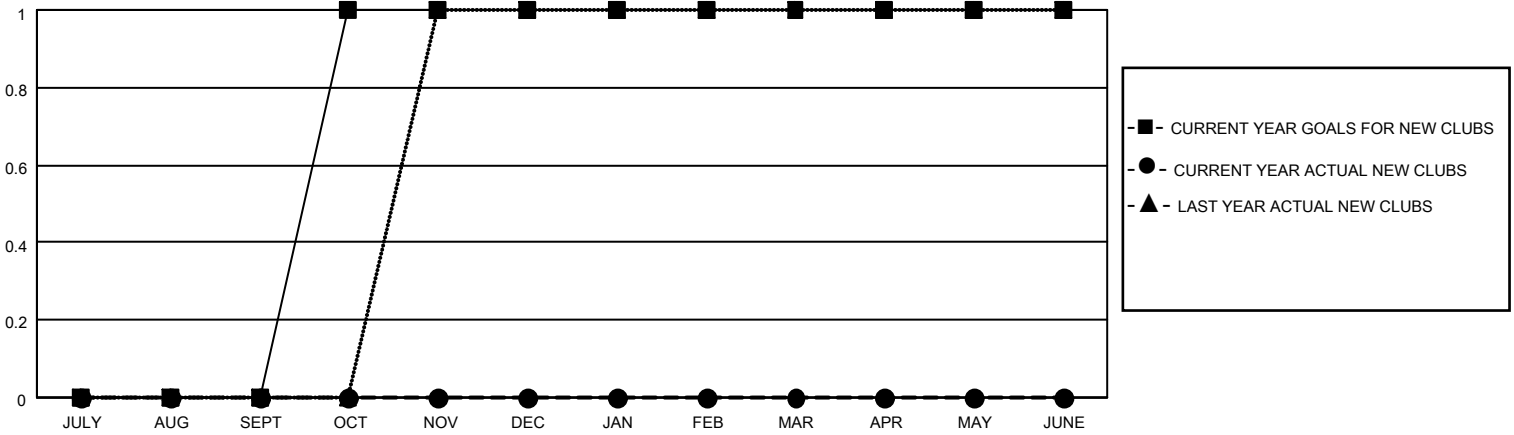
District 49 A

Results as of: 12/31/2022

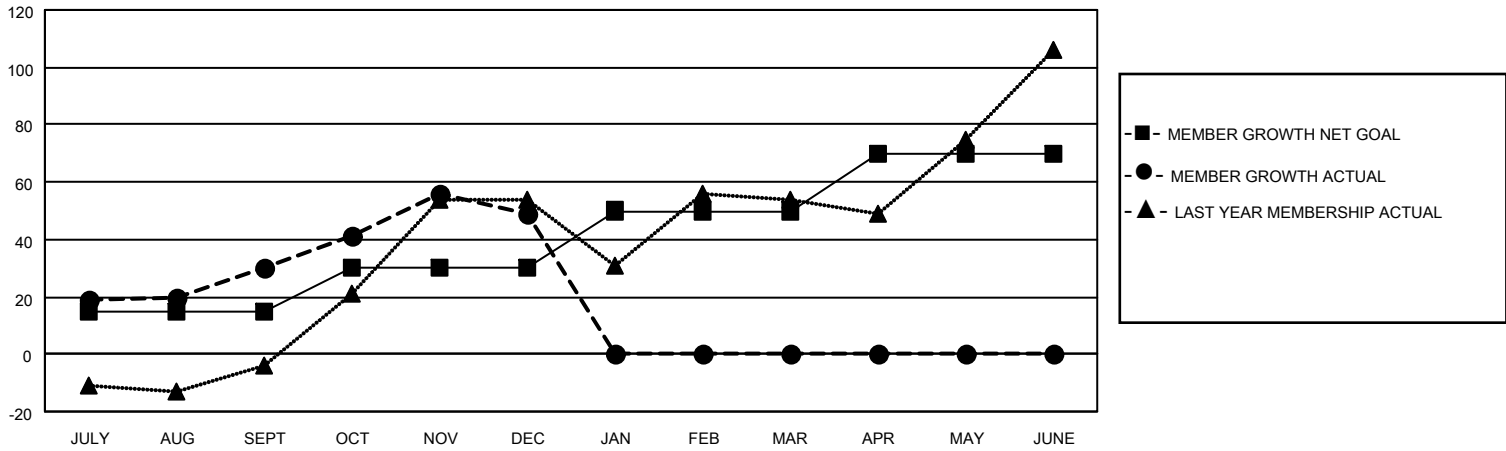
Clubs			
RESULTS FOR 2022-2023			
QUARTER	NEW CLUB GOAL	NEW CLUBS	DROPPED CLUBS
JULY/AUG/SEPT	0	0	0
OCT/NOV/DEC	1	0	0
JAN/FEB/MAR	0	0	0
APR/MAY/JUNE	0	0	0

Members			
RESULTS FOR 2022-2023			
QUARTER	MEMBER GROWTH NET GOAL	MEMBER GROWTH ACTUAL	DROPPED MEMBERS ACTUAL (including transfers)
JULY/AUG/SEPT	15	46	12
OCT/NOV/DEC	15	46	25
JAN/FEB/MAR	20	0	0
APR/MAY/JUNE	20	0	0

GOALS AND ACTUAL NEW CLUBS CUMULATIVE



GOALS AND ACTUAL MEMBERS CUMULATIVE



DROPPED CLUBS: 0

16 CLUBS OF 33 ADDED 1 OR MORE NEW MEMBERS

GENDER DISTRIBUTION

MALE	759 (58.56%)
FEMALE	525 (40.51%)
NON BINARY	0 (0.00%)
PREFER NOT TO ANSWER	12 (0.93%)

DROPPED MEMBERS

DECEASED	4
CLUB CANCELLED	0
OTHER	33
TOTAL	37

[CLICK HERE FOR CUMULATIVE MEMBERSHIP DATA](#)

TOTAL FAMILY UNIT MEMBERS 278

FAMILY MEMBERS PAYING HALF DUES 146